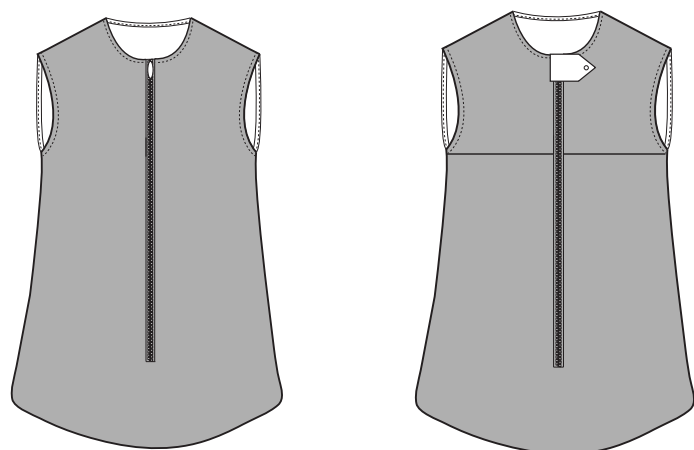




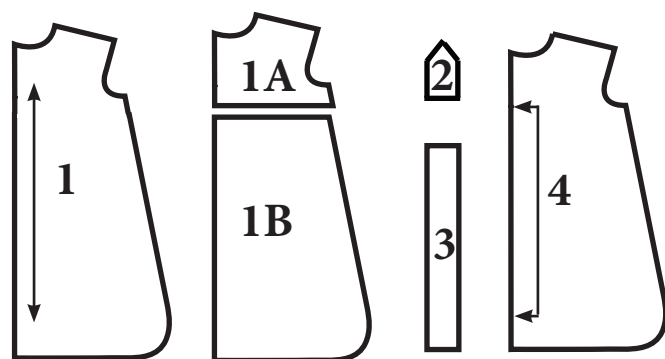
The Snuggle Sack



View A Snuggle Sack is made from one fabric. The fabric should be stretchy, such as knit or fleece.

View B Snuggle Sack is made from two fabrics and has optional zipper and chin guards. Non-stretchy fabric can be used for this version.

Pattern Pieces



- 1- One Piece Front
- 1A - Two Piece Front Yoke
- 1B - Two Piece Front Bottom
- 2 - Chin Guard
- 3 - Zipper Guard
- 4 - Back

Some fabrics have a directional print, such as kitties that are all sitting in the same direction. If your fabric has a directional print, make sure that you lay your pattern piece on the fabric so that the top of the print is at the top of the pattern piece.

Sewing Glossary

Edgefinish: Finishing off raw edges to prevent raveling in the wash. You can serge or zig-zag stitch the edges to accomplish this.

Selvedge: The edge of a fabric that is woven so that it will not fray or ravel.

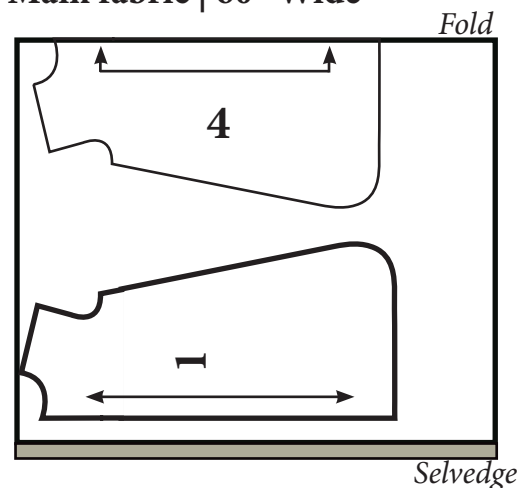
Fold: Where the fabric doubles up so that one part lies on another part. Do not cut the side of the pattern that is placed on the fold.

Grain: The direction of fibers in a woven fabric. When a pattern has a grainline, you will need to place it so that it runs parallel to the selvedge or fold of fabric.

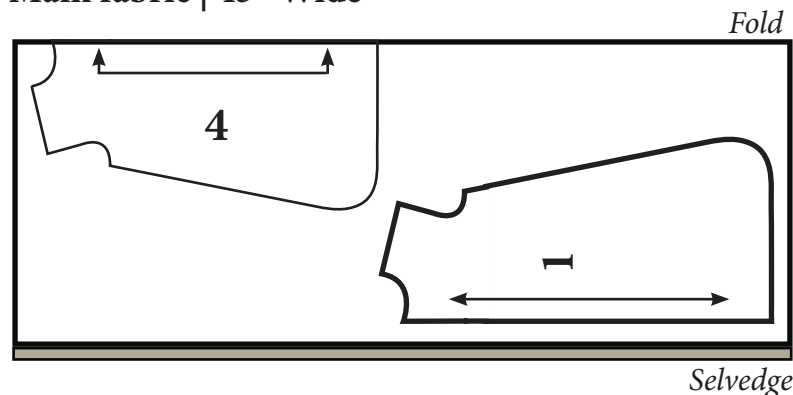
Fabric Layout

View A: One Piece Front Version

Main fabric | 60" Wide

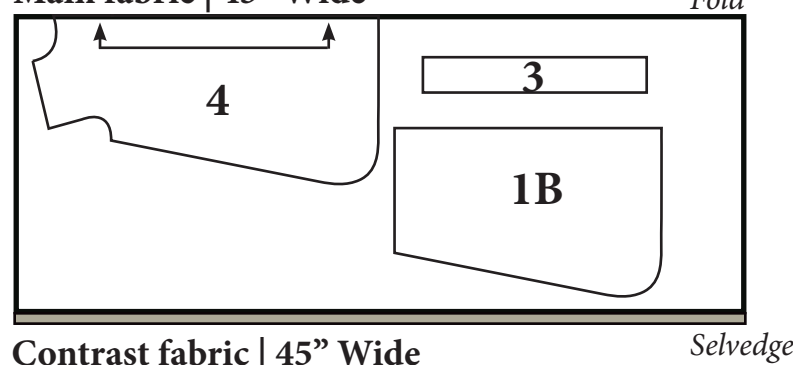


Main fabric | 45" Wide

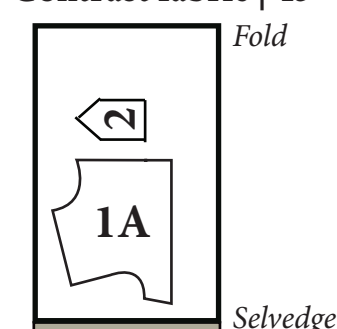


View B: Two Piece Front Version

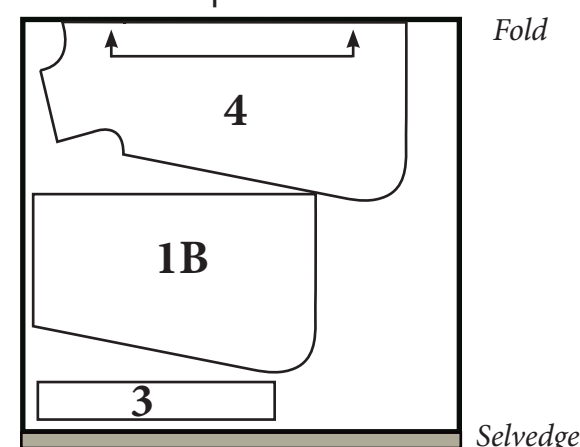
Main fabric | 45" Wide



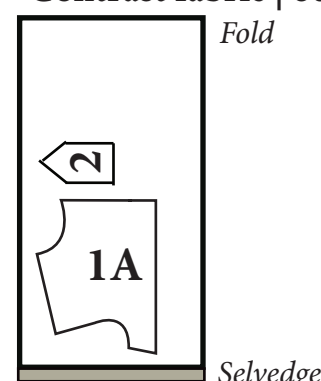
Contrast fabric | 45" Wide



Main fabric | 60" Wide



Contrast fabric | 60" Wide



Sewing Directions

All seam allowances are 5/8" unless otherwise noted

Wrong side of fabric



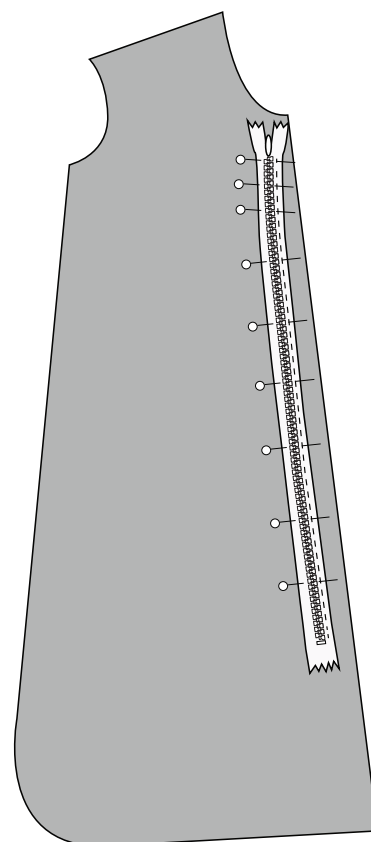
Right side of fabric



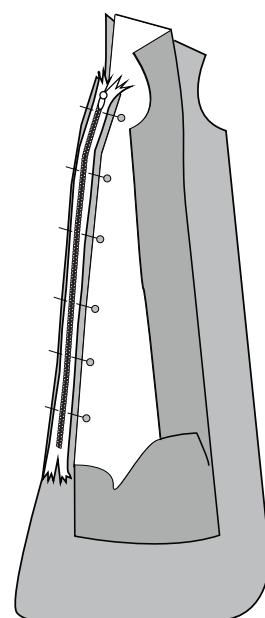
View A: One Piece Snuggle Sack

1.) Place right side of zipper with teeth facing down, (teeth should be on the left side of your stitching) to right side of center front pieces, 3/4" from upper raw edge and coil 5/8" from long edge. Stitch zipper down, 1/4" from coil. (This zipper installation method will expose the coil, which will help keep it from getting caught in the fabric. The installation is very similar to how invisible zippers are installed, but because you will be using a regular zipper, the coil will show.)

Perfect Exposed Coil Zipper Tip- Instead of pinning, apply a strip of Wonder Tape to each half of the right sides of the zipper. Peel off the paper backing and stick to the right side of the seam allowances of the center front pieces. The top of your zipper teeth should be 3/4" from the raw edge of the neck, and the zipper coil should be centered on the seamline- 5/8" away from the center front edge.

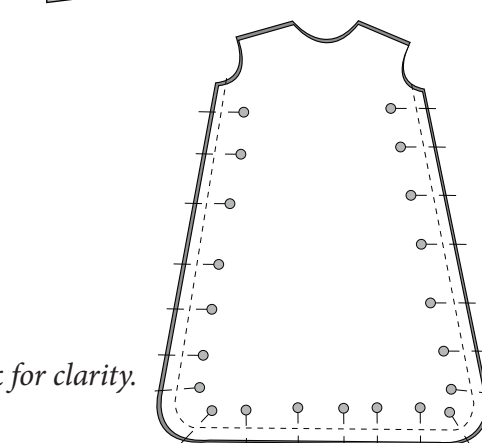
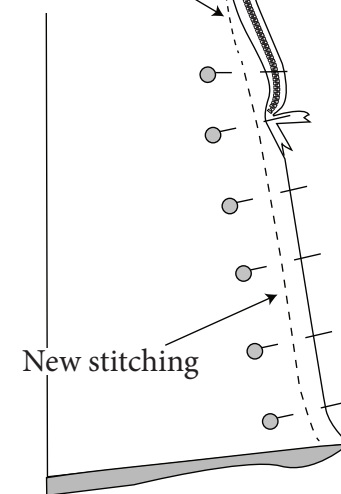


2.) Place the other side of zipper, using Wonder Tape or pins, with teeth down, to left side of garment, matching edge of zipper with raw edge of fabric, 3/4" from top. Stitch down.



3.) Connect right sides of garment below zipper, pushing the bottom of the zipper out of the way. Start by stitching close to the stitches from zipper lower edge and continuing those stitches down to complete the seam.

Stitching from installing zipper

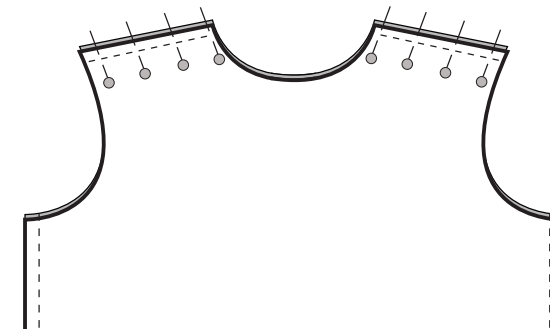


Shown from back for clarity.

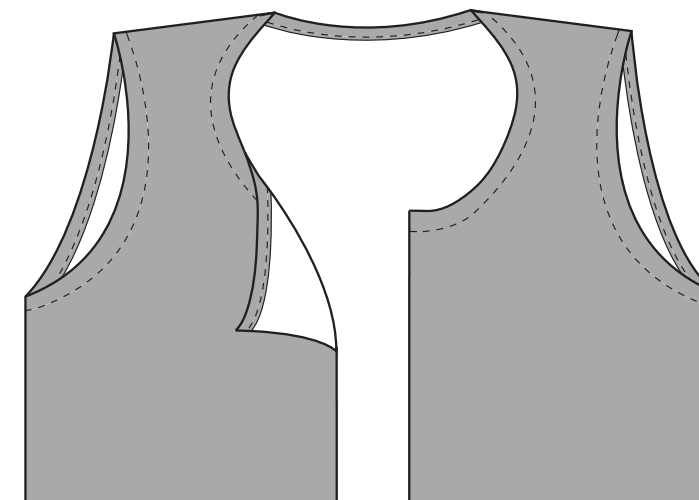
5.) Pin back shoulder seam to front shoulder seam with right sides together, stitch at 5/8".

Press open.

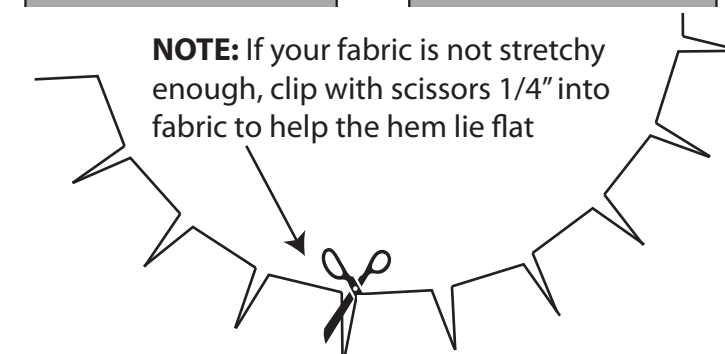
Tip- If using minky or a polyester fleece, do not use a warm iron. Just finger press the seams flat.



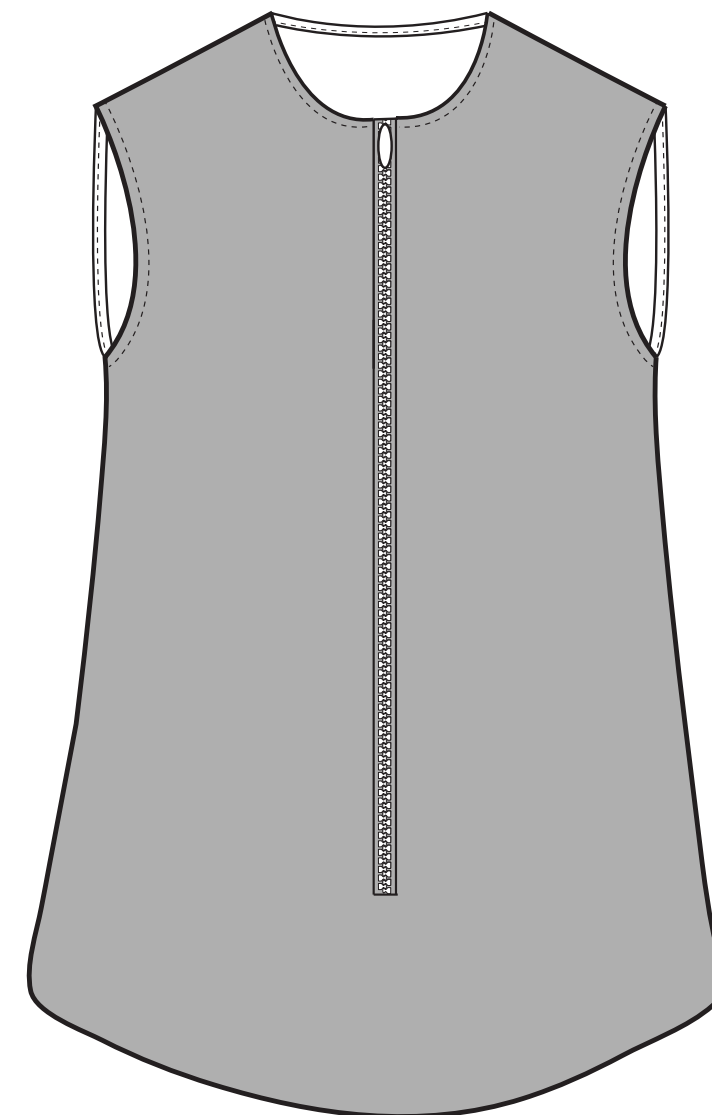
6.) To finish armholes and neckline, fold fabric over towards wrong side 1/4" twice and stitch down.



NOTE: If your fabric is not stretchy enough, clip with scissors 1/4" into fabric to help the hem lie flat



Congratulations! You're done!



Completed Snuggle Sack, View A

For View B, turn to next page

© SewBaby! www.sewbaby.com

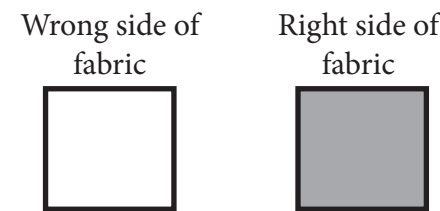
All Rights reserved. No part of the material protected by this copy right notice may be reproduced or utilized in any form or by any means, electronic or mechanical, including photocopying, recording or by any informational storage and retrieval system without written permission from the copyright owner.

If you would like to make more than 10 items from this pattern to sell commercially, please contact us for a royalty contract.

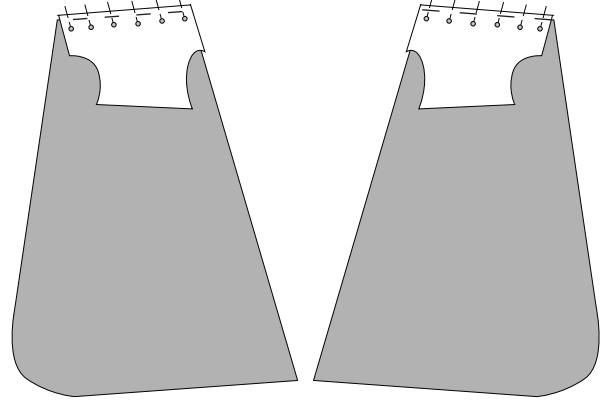
The designer disclaims any liability for any unfavorable results, losses, or risks due to use and application of information presented herein.

View B: Two Piece Snuggle Sack with Guards and Bias Binding

All seam allowances are 5/8" unless otherwise noted.



1.) Sew front yokes to main body, right sides together.

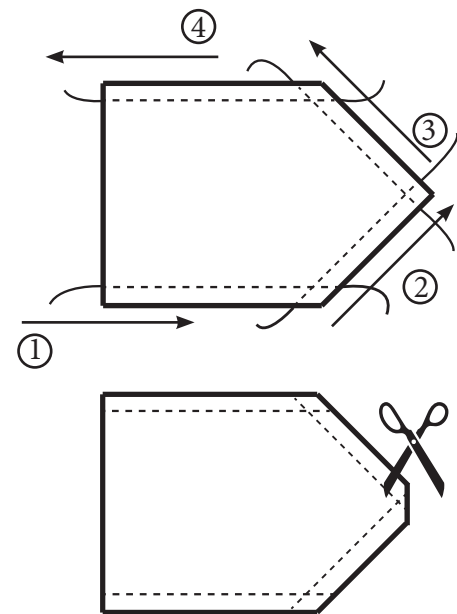


2.) Pin chin guard pieces right sides together and stitch 1/4" from raw edge, leaving bottom portion of guard open to flip the chin guard rightside out.

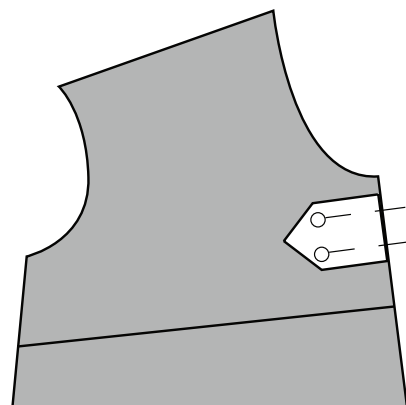
NOTE: 1/4" seam allowance on this piece only!

Tip: To get a pointy tip on your chin guard, stitch past the turn and continue till the opposite end of guard. Repeat for remaining side.

Remove excess fabric at tip of guard with scissors up to the stitching line. Turn right side out.

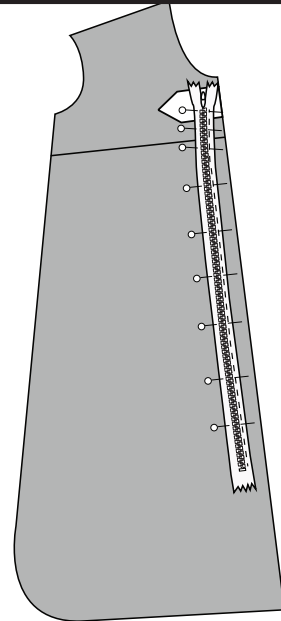


3.) Pin chin guard to right side of right yoke and baste in place, making sure that the point of the chin guard is pointed towards the armhole.



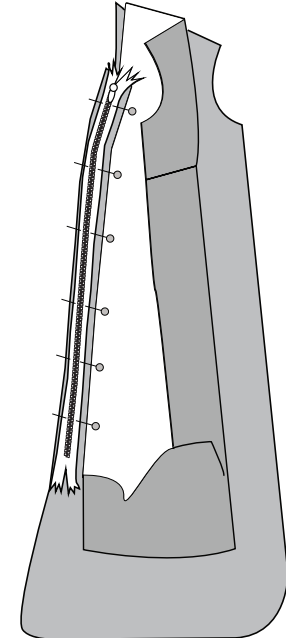
4.) Place right side of zipper with teeth facing down, (teeth should be on the left side of your stitching) to right side of center front pieces, 3/4" from upper raw edge and coil 5/8" from long edge. Stitch zipper down, 1/4" from coil. (This zipper installation method will expose the coil, which will help keep it from getting caught in the fabric. The installation is very similar to how invisible zippers are installed, but because you will be using a regular zipper, the coil will show.)

Perfect Exposed Coil Zipper Tip- Instead of pinning, apply a strip of Wonder Tape to each half of the right sides of the zipper. Peel off the paper backing and stick to the right side of the seam allowances of the center front pieces. The top of your zipper teeth should be 3/4" from the raw edge of the neck, and the zipper coil should be centered on the seamline- 5/8" away from the center front edge. This will help you see if the seamline joining the upper front and lower front will match on both sides of the zipper. If it doesn't, just lift up the zipper and readhere it a little higher or lower, until your seamline matches on both sides.

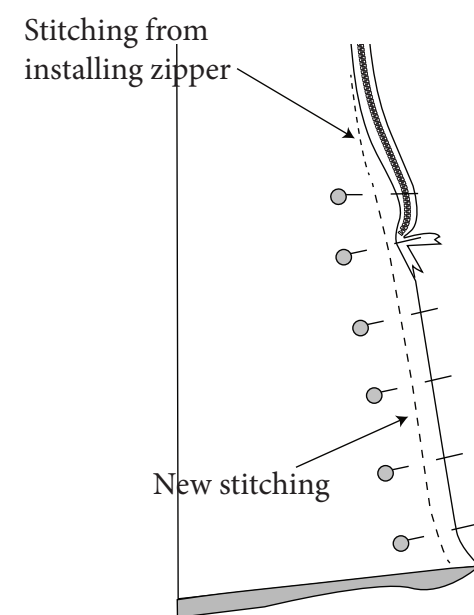


5.) Place the other side of zipper, using Wonder Tape or pins, with teeth down, to left side of garment, matching edge of zipper with raw edge of fabric, 3/4" from top. Stitch down.

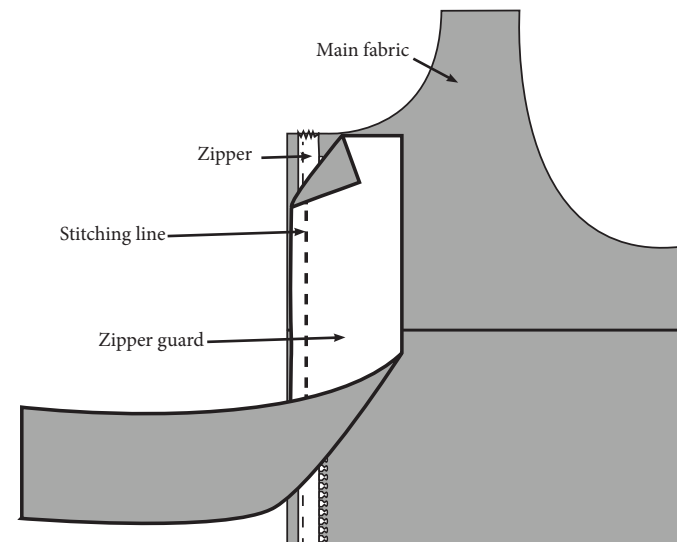
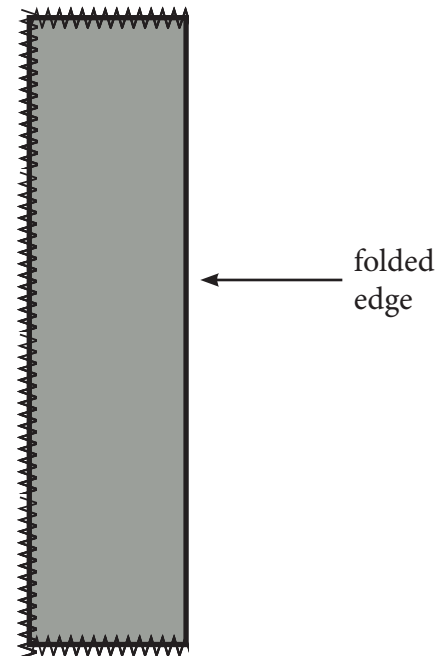
NOTE: Make sure that the yoke seams match up if you are doing a Two Piece Version!



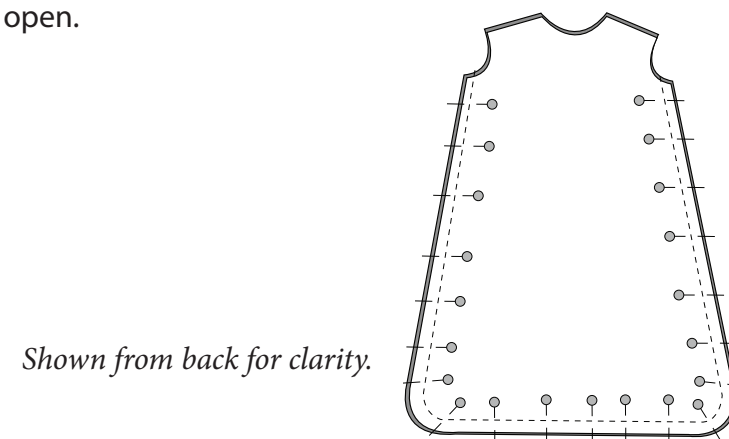
6.) Connect right sides of garment below zipper, pushing the bottom of the zipper out of the way. Start by stitching close to the stitches from zipper lower edge and continuing those stitches down to complete the seam.



7.) Edge finish guard around top, bottom and unfolded side, wrong sides together, folded hotdog style. Pin non-folded side of guard behind the zipper tape to the 1/4" remaining on the zipper seam allowance. Stitch in place.

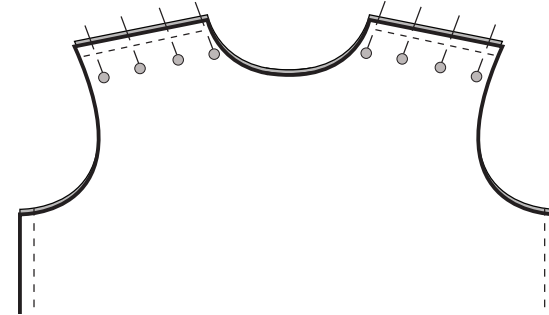


8.) Pin right sides together of side seams and stitch 5/8". Make sure that the yoke seams are pinned up, towards shoulders and that the seam below the zipper is pinned open.



9.) Pin back shoulder seam to front shoulder seam with right sides together, stitch at 5/8".

Press open and edgefinish all raw edges of shoulders and sides.

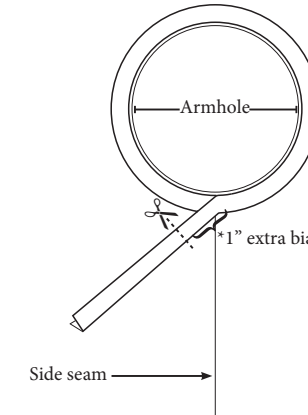


! If you are working with a *woven* fabric, you will need to attach bias binding to finish the edges. Please follow steps 10-15.

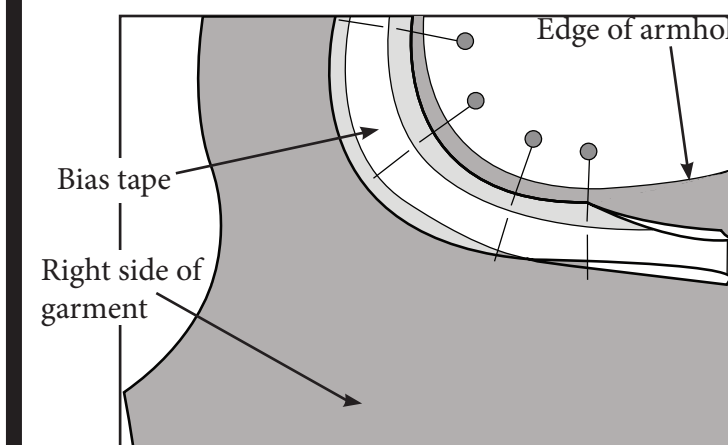
● If you are working with a *knitted* fabric, you can turn under the edges to finish them. Please go to step 6 of the One Piece Version.

10.) "Walk" bias binding around armhole to determine amount of binding needed, alternatively use a flexible ruler

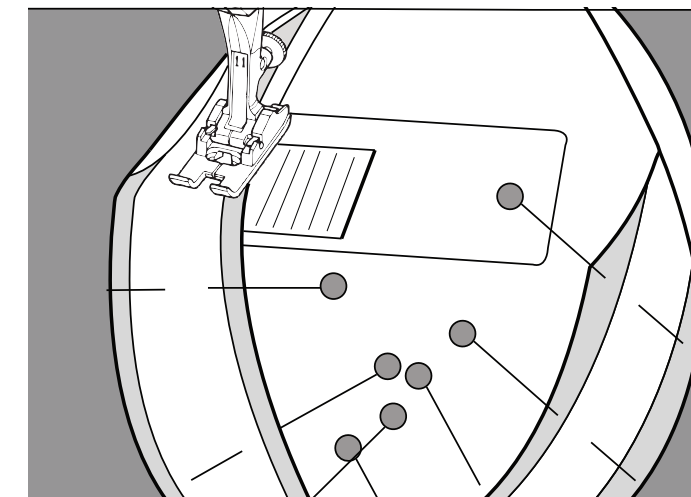
Starting at side seam, hold start of binding and "walk" the binding around the circumference of the armhole til you reach all the way around. Add an extra 1" to this measurement (for wiggle room) and cut.



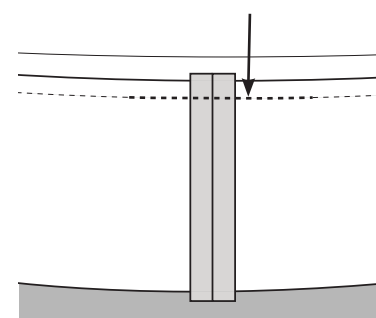
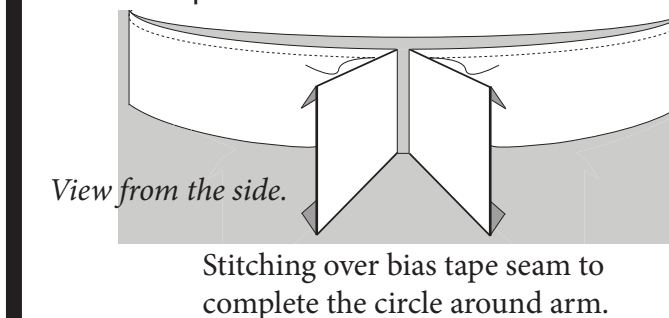
11.) Pin the right side of the open bias tape to the right side of one armhole, leaving about 1" of tape hanging. Walk the tape around the armhole carefully, making sure that there are no gaps or bunches and placing crease of bias tape fold on the 5/8" seamline.



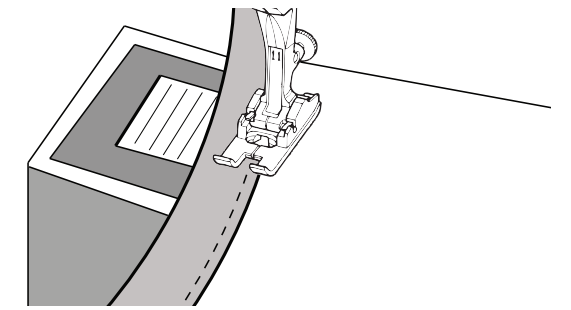
12.) Sew along the "ditch" of the bias tape that is closest to the edge. Go all the way around the armhole but leave a small portion (about 1/2") unsewn.



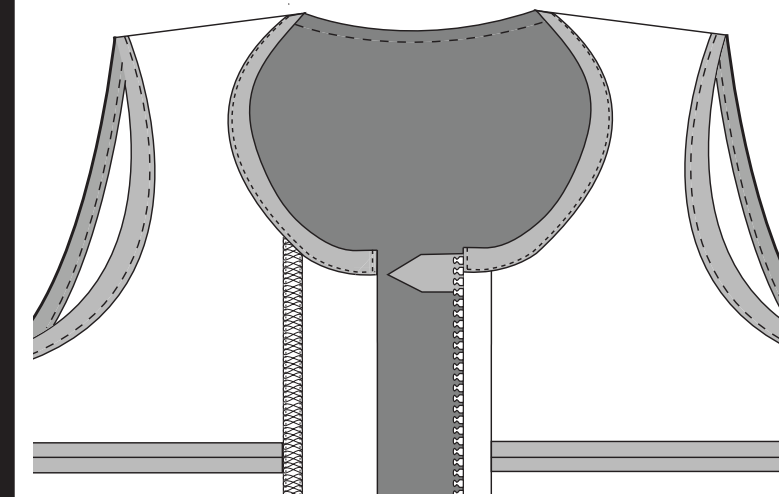
13.) Stitch ends of bias tape together and cut off excess tape. Press seam open. Continue stitching around armhole to complete the circle around the arm.



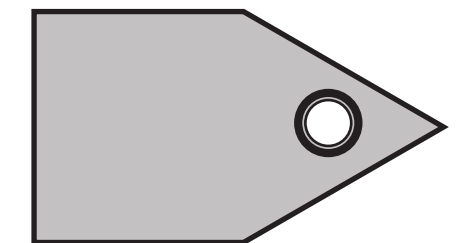
14.) Press bias tape over to wrong side of garment, making sure none of the tape peeps through the other side. Stitch along the edge of the bias tape. Press.



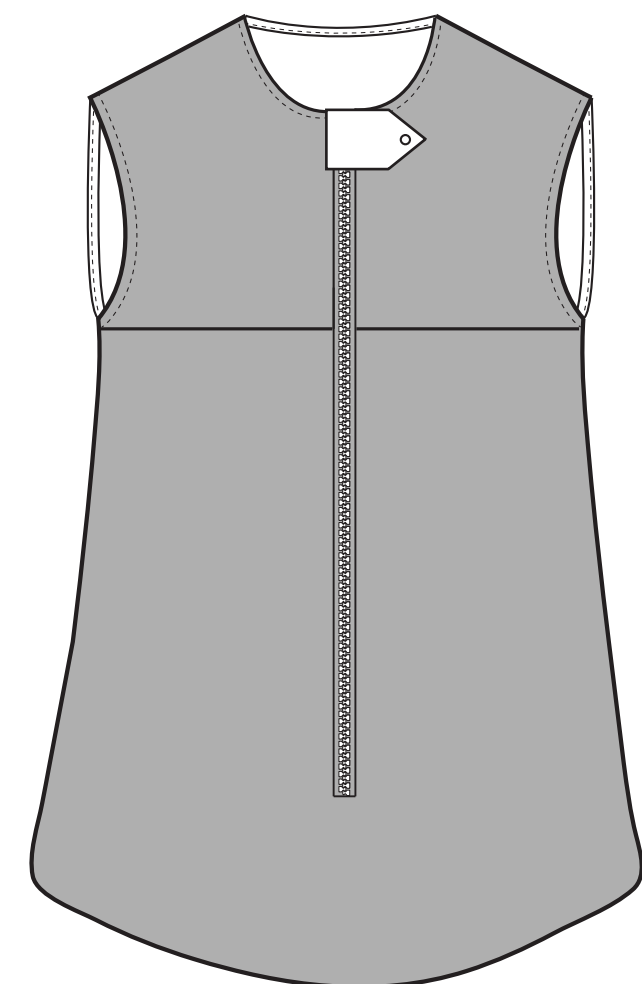
15.) Apply bias bind to neckline as shown for armholes. To finish edge of bias tape on the neckline, fold under 1/4" and stitch down.



16.) Attach top of snap to chin guard following manufacturer's instructions and attach bottom portion of snap on the yoke (piece 1A) or one piece front (piece 1) so that the chin guard is taut. Alternatively, use a Velcro dot on the underside of chin guard.



Congratulations! You're done!



Completed Snuggle Sack, View B